

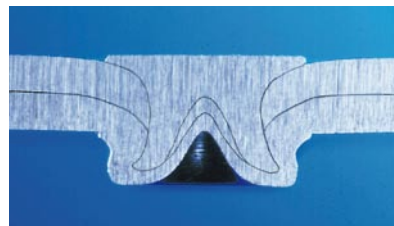
Fastriv[®] In Tape Self-piercing Rivets

For continuous installation in small to medium volume production

Fastriv[®] rivets allow dissimilar materials to be fastened providing consistent, high joint strength, comparable to spot welds and other mechanical fastening methods. This self-piercing rivet technology offers fastening without piercing through the back substrate ensuring a fully sealed joint.

Fastriv[®] In Tape self pierce rivets (SPR) are supplied inserted in a resin tape to greatly improve speed and ease of installation in small to medium volume applications. Avdel[®] recommends Fastriv[®] In Tape when the capital investment in blow-fed SPR technology is not economically viable.

Fastriv[®] In Tape (FIT) are available pre-loaded on mini-reels for low volume applications or on larger tape carrier spools which can hold up to 10,000 rivets.



Fastriv[®] joints are leak proof and have a very high degree of joint integrity

Features and Benefits

- Same outstanding performance of regular Fastriv[®]
- Low cost means of containing the rivets and feeding them directly to the installation equipment
- No loose parts, easy handling, storage and usability
- Fully customisable packaging to suit application and tooling requirements
- Multiple tape colours available for identification purposes to improve quality
- Wide range of automation and manual tooling options available
- Low capital investment
- Installs with standard Avdel[®] SN1 GZ and SN2 portable SPR tooling
- Capable of being installed with existing SPR tooling*

*Subject to IP of design, may require some modifications

Specifications

| | |
|------------|-------------------------|
| Sizes | 3.2 mm, 4.8 mm, 5.3 mm |
| Materials | Steel & Stainless Steel |
| Headform | Countersunk |
| Poke style | Chamfered and square |

Customized lengths, diameters, tape and reel solutions on special request.

Please note that optimal performance is dependent on material thickness and hardness. Testing is required to determine proper rivet selection and die configuration as well as tooling for specific applications. Please contact an Avdel application engineer for assistance.

For tooling information please refer to page 2.



Avdel USA LLC
614 NC Highway 200 South
Stanfield, North Carolina 28163
Tel. +1 704 888-7100 · Fax -0258
infoAvdel-USA@infastech.com

www.avdel-global.com

Avdel Canada Limited
1030 Lorimar Drive
Mississauga, Ontario L5S 1R8
Tel. +1 905 364-0664 · Fax -0678
infoAvdel-Canada@infastech.com

© 2011 Infastech

Avdel[®], and Fastriv[®] are trademarks of Avdel UK Limited.

11.2011, page 1/2

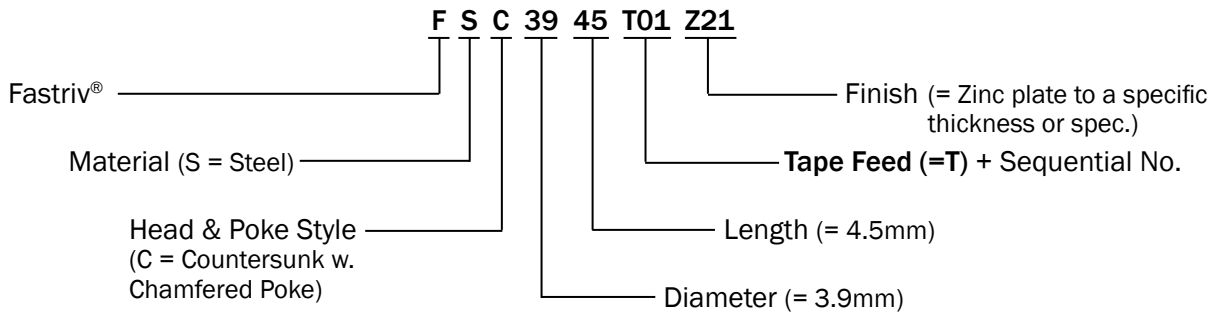
Data shown is subject to change without prior notice as a result of continuous product development and improvement policy.
Your local Avdel representative is at your disposal should you need to confirm latest information.

Fastriv® In Tape Self-piercing Rivets

For continuous installation in small to medium volume production

Part Numbering System

Please find below an example on how to define existing and new Fastriv® part numbers.



Installation Equipment



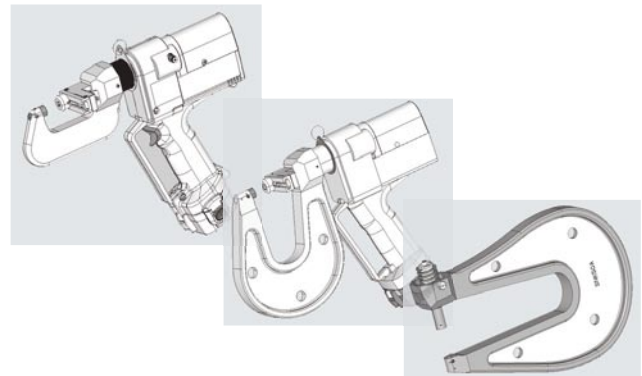
Battery hand tool SN1 GZ



SN2 portable tool with
hydraulic intensifier

C-frame Options

Depending on the application requirements the tools can be equipped with different C-frame types:



Fastriv® In Tape Self-piercing Rivets can be installed using the Avdel® SN1 GZ battery hand tool or Avdel® SN2 portable tool with hydraulic intensifier.

Tooling Details

Avdel Part No.

78200-050154
78200-050150
78230-050786
78230-050328
78230-050789

Description

Feed mechanism for SN tooling (ø3.2/3.4 mm)
Feed mechanism for SN tooling (ø4.8/5.3 mm)
SN1 GZ special light C-frame (ø3.2mm only/max. 35 kN)
100 mm C-frame (ø3.2/4.8/5.3 mm)
200 mm C-frame (ø3.2/4.8/5.3 mm)



www.avdel-global.com

Your local Avdel® contact is:
Grond Group
Litovskaya Str. 10 • 194100 Saint Petersburg • Russia
Fax: +7 812 677 95 66 • dz@pmetiz.ru



© 2011 Infastech

Avdel®, and Fastriv® are trademarks of Avdel UK Limited.

11.2011, page 1/2

Data shown is subject to change without prior notice as a result of continuous product development and improvement policy.
Your local Avdel representative is at your disposal should you need to confirm latest information.